

Grid Metals Provides a Further Update at East Bull Lake Drilling Commences

Toronto, Ontario, September 9, 2020 **Grid Metals Corp.** (the "**Company**") (TSXV:GRDM) is pleased to provide an update on the ongoing 2020 diamond drilling program at its 100% owned East Bull Lake ("EBL") palladium property (the "Property") in Ontario. The Company plans to test the main structural zone on the property at several locations along its 12 km extent. In the first phase of drilling anomalous palladium grades were intersected in both of the targets tested at the Parisien Lake target area. The East Bull Lake Property covers approximately 85% of the palladium-bearing East Bull Lake Intrusion, located approximately 80 km west of Sudbury, Ontario.

HIGHLIGHTS

- The final two holes from Phase 1 returned additional, anomalous palladium grades in association with the shallow geophysical anomaly that was tested;
- Drilling has now resumed at the East Bull Property;
- Several widely spaced drill holes are planned and these will test additional, near surface geophysical anomalies that are spatially associated with an interpreted 12 km long feeder structure; and,
- Initially, two target areas will be tested but ongoing field investigations may prompt testing of a third area.

Proposed hole locations for the fall drilling program are shown in Figure 1.

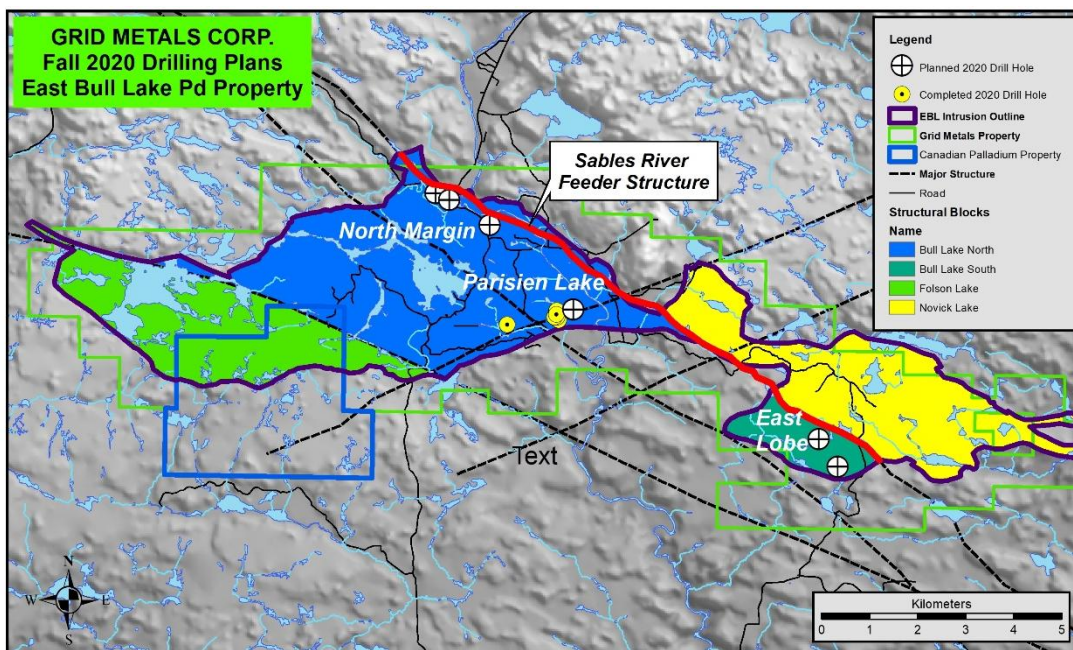


Figure 1. East Bull Lake Property Map showing location of drill holes planned for the fall campaign (Note: drilling plans are subject to change).

The technical program of the Company is being overseen by Dr. Dave Peck, P. Geo., who is a leading global explorer for platinum group metals and nickel. He commented "*We have planned the next phase of drilling to further vector towards areas of higher grade palladium mineralization at the Property. We*

will continue to test near surface geophysical anomalies that we believe to represent areas of enhanced sulfide content and Pd grade. We are specifically focusing on anomalies associated with an interpreted, 12 km long primary feeder structure – looking for zones of enhanced Pd grade and thickness within or directly adjacent to this structure.”

Update on Phase 1 Drilling Results

Holes EBL20-06 and EBL20-07 were drilled to follow up on encouraging results observed in hole EBL20-05 as reported on in the Company’s August 6th, 2020 news release. These holes targeted the western edge of an extensive, near surface resistivity anomaly identified from the spring 2020 magnetotelluric (MT) survey on the property. Selected analytical results are tabulated below.

Weighted Average Grades for Drill Hole EBL20-06

	From	To	Length	Pd (g/t)	Pt (g/t)	Au (g/t)	3E*(g/t)	Cu (%)	Ni (%)
	14.00	67.00	53.00	0.29	0.09	0.02	0.40	0.06	0.04
<i>including</i>	18.00	23.00	5.00	0.78	0.18	0.03	0.99	0.03	0.03
<i>and</i>	30.00	33.00	3.00	0.72	0.23	0.09	1.04	0.11	0.06

Weighted Average Grades for Drill Hole EBL20-07

	From	To	Length	Pd (g/t)	Pt (g/t)	Au (g/t)	3E*(g/t)	Cu (%)	Ni (%)
	15.00	32.00	17.00	0.42	0.11	0.02	0.55	0.03	0.04
<i>including</i>	25.00	32.00	7.00	0.78	0.17	0.04	1.01	0.07	0.07
<i>with</i>	28.00	30.00	2.00	1.65	0.37	0.11	2.14	0.17	0.12

Notes:

1. 3E* is the average of the sum of the Pd, Pt and Au grades.
2. The interval widths shown in the table are not true widths, which can’t be accurately estimated at this time due to a lack of geological information.

Plans for the Fall 2020 Drilling Program

Follow Up on Parisien Lake Drilling

The first hole to be drilled in the fall campaign will test a stronger part of the near surface MT anomaly intersected in holes EBL20-04 to 07. The new hole will be collared several hundred metres to the east of hole EBL20-05 (**Figure 1**) in closer proximity to the interpreted main feeder to the intrusion – the Sables River structure.

North Margin Target Area

The Company also plans three holes in the North Margin area, an area of the East Bull Lake property with only one previous drill hole, EB12-05 (Figure 1). This hole is located 500 metres to the southeast of the southernmost of the planned holes. It intersected 5.50 metres averaging 1.91 g/t Pd and 0.44 g/t Pt including a 2.0 metre sub-interval with 4.26 g/t Pd and 0.89 g/t Pt. The three planned drill holes will be widely spaced and will cover an approximately 1.3 km long section of the near surface (i.e., 50-200m depth) MT anomaly that adjoins the Sables River structure in this area.

East Lobe South Margin Target Area

The Company currently has two drill holes planned for the East Lobe South Margin target area (Figure 1). The area has been the subject of extensive surface sampling that has defined two sub-parallel, east-striking zones of palladium mineralization (Central and South zones) located immediately west of the Sables River structure. Ongoing field investigations are focused on validating historical sampling and ground truthing several MT anomalies in the area. The holes will test both near surface Mt anomalies and significant, historical surface sampling results.

Quality Assurance and Quality Control

Grid Metals applies best practice quality assurance and quality control ("QAQC") protocols on all of its exploration programs. For the current drilling program, core is logged and sampled at a core facility located in the town of Massey, Ontario – approximately 30 km south of the property. NQ-size drill core samples are cut into halves using a diamond saw. Standard sample intervals of 1.00 metre length are used unless a major geological, structural or mineralization boundary is encountered. Samples are bagged and tagged and driven by Company consultants to ALS Laboratories' sample preparation and analytical laboratory in Sudbury, Ontario. ALS analyzes each sample for Pd, Pt and Au using a lead collection fire assay on a 30 g pulp split and an ICP finish. Copper, Ni and Co are analyzed by ALS using a multi-acid digestion and an ICP finish. The Company uses two PGE certified reference materials ("CRMs") and one analytical blank purchased from Canadian Resource Laboratories to monitor analytical accuracy and check for cross contamination between samples. One of the CRMs or the blank are inserted every tenth sample within a given batch. The analytical results for the two CRMs and the blank for the sample batches reported here did not show any significant bias compared to the certified values and the results fell within the acceptable limits of variability.

Dr. Dave Peck, P.Geo., has reviewed and approved the technical content of this release for purposes of National Instrument 43-101.

About Grid Metals Corp.

Grid Metals Corp. is an exploration and development Company that has a diversified portfolio of projects in the nickel-copper-platinum group metal sectors. These commodities are vital to the emerging battery metals, energy storage and automotive sectors. All of Grid's projects are located in secure North American mining jurisdictions. The Company is focused on timely advancement of its property portfolio through prudent exploration and development activities.

To find out more about Grid Metals Corp., please visit www.gridmetalscorp.com.

On Behalf of the Board of Grid Metals Corp.

Robin Dunbar - President, CEO & Director Telephone: 416-955-4773 Email: rd@gridmetalscorp.com

David Black - Investor Relations Email: info@gridmetalscorp.com

We seek safe harbour.

This news release contains forward-looking statements within the meaning of the United States Private Securities Litigation Reform Act of 1995 and forward-looking information within the meaning of the Securities Act (Ontario) (together, "forward-looking statements"). Such forward-looking statements may include the Company's plans for its properties, the overall economic potential of its properties, the availability of adequate financing and involve known and unknown risks, uncertainties and other factors which may cause the actual results, performance or achievements expressed or implied by such forward-

looking statements to be materially different. Such factors include, among others, risks and uncertainties relating to potential political risk, uncertainty of production and capital costs estimates and the potential for unexpected costs and expenses, physical risks inherent in mining operations, metallurgical risk, currency fluctuations, fluctuations in the price of nickel, cobalt, copper and other metals, completion of economic evaluations, changes in project parameters as plans continue to be refined, the inability or failure to obtain adequate financing on a timely basis, and other risks and uncertainties, including those described in the Company's Management Discussion and Analysis for the most recent financial period and Material Change Reports filed with the Canadian Securities Administrators and available at www.sedar.com.

Neither the TSX Venture Exchange nor its Regulations Services Provider (as that term is defined in the policies of the TSX Venture Exchange) accepts responsibility for the adequacy or accuracy of this press release.

This news release does not constitute an offer of securities for sale in the United States. The securities being offered have not been, nor will they be, registered under the United States *Securities Act of 1933*, as amended, and such securities may not be offered or sold within the United States absent U.S. registration or an applicable exemption from U.S. registration requirements.